

Spring Gulch Equestrian Area

The Highlands Ranch Metropolitan District Board of Directors approved the Spring Gulch Equestrian Area and Pond Recreation Lease with the U.S. Army Corps of Engineers at their meeting April 28. The Metro District will take over management of the property from Colorado State Parks beginning June 5, 2009.

The Spring Gulch Equestrian Area is located east of Santa Fe Drive and south of Redstone Park and Shea Stadium. It's a 105-acre facility that has been used for more than 30 years for equestrian jumping. It contains a series of trails and jumps designed for the English style of riding. Equestrian groups use the property for three organized events each year and informally throughout the year for horse and rider training.

The Metro District is making the equestrian area more accessible to the public by reducing the fee from \$7 per day to \$5 or \$25 for an annual pass. The hours of operation will also be expanded to 8 a.m. to sunset year-round. An annual pass can be purchased at the Metro District's Parks, Recreation and Open Space Service Center at 3280 Redstone Park Circle.

As part of the new lease agreement, the Metro District will make the following improvements:

- A horse crossing built across Spring Gulch
- Smooth-wire fencing on the west and north sides of the equestrian area
- Addition of 120 parking spaces south of Shea Stadium
- East-West Regional Trail located on the north and west sides of the property and addition of a new trailhead directly south of Shea Stadium
- Improvements to the Spring Gulch Pond located on the west side of Santa Fe Dr. including a new fishing pier and trails
- Park and equestrian storage area in Redstone Park behind Roxborough Field
- Relocation of compost pile to create additional parking areas
- Metro District service yard expansion

The Metro District outlined a three-phase approach to allow a smooth transition of maintenance and management of the area from Colorado State Parks.

Phase One- May 1 – June 5

- Four-strand smooth-wire fence and maintenance gates
- ID and rules and regulation signs
- Relocated fee station
- Relocated solar-powered sliding gate
- Crossing for equestrian event starting area

Phase Two- June 6 – Sept. 30

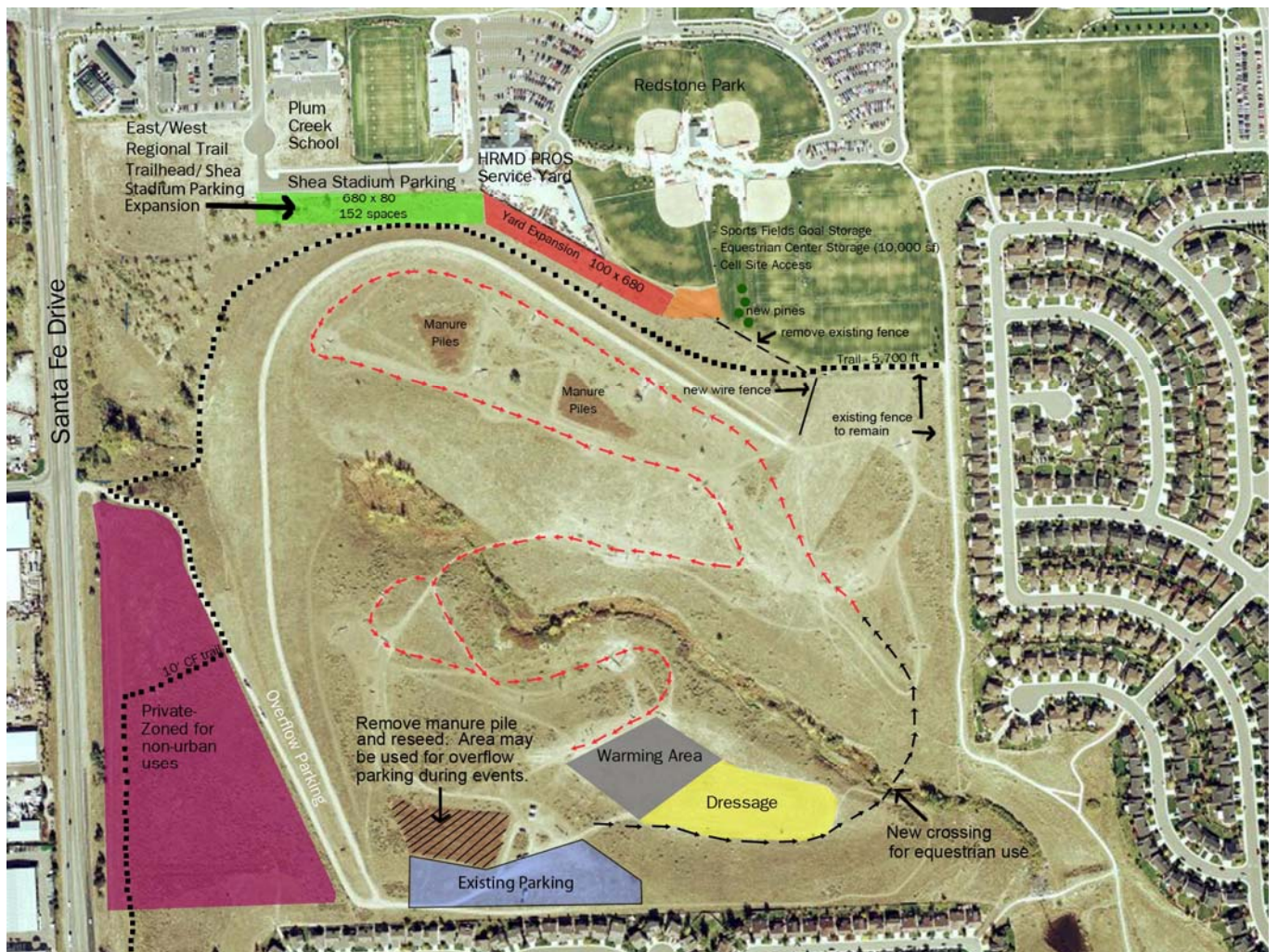
- East/West Regional Trail construction
- Parking lot expansion at Shea Stadium
- Metro District Service Center yard expansion
- Equestrian Area compost spreading and reseeded
- Restroom improvements

Phase Three- Oct. 1 – Spring 2010

- Spring Gulch Pond trails, boardwalk and fishing pier
- Signs

For more information about the Spring Gulch Equestrian Area and Pond contact Bill Dailey, natural resources manager, at 720-240-5924 or bdailey@highlandsranch.org.

Spring Gulch Equestrian Area Map



May 2009